



HOTEL
PRINZ-LUITPOLD-BAD

INFORMATIONAL BROCHURE





We warmly welcome you to Hotel Prinz-Luitpold-Bad,

Originally built in 1864, our hotel is situated on a gentle mountain slope with panoramic views of the majestic Bavarian Alps. As our guest, you will be the beneficiary of our family's more than 150 years of hospitality experience. Our hotel has many delightful experiences to offer you including: exquisite dining, comfortable guest rooms, and a sulphuric spring that feeds our indoor pool, as well as helps provide many of our spa treatments.

We look forward to pampering you.

A handwritten signature in dark ink, appearing to be 'Gross', is centered above the text 'Your Gross family'.

Your Gross family



Pillow menu

Along with our crisp, mountain air, we offer our guests a selection of pillows to help ensure a good night's sleep.

Below are our pillow selections*.

Neck pillow

Orthopedic neck pillow (50 x 30 cm)

Organic spelt pillow (40 x 80 cm)

Hypo-allergic pillow (40 x 80 cm)

Feather pillow medium (soft/firm) (40 x 80 cm)

Feather pillow small (40 x 40 cm)

Already in your closet: Feather pillow large (80 x 80 cm)**

Blanket menu

Extra-long blankets

Down blanket

Thicker blankets

Thin Silk Blankets

Please contact reception or housekeeping if you would like to request a specific type of pillow.

* Please note that not all pillows/blankets may be available at the desired time.

**Synthetic pillows in allergy rooms (ground floor)

In and around the hotel



Spa

Relax in our lavish spa area with everything your heart desires: pools, saunas, steam bath and resting areas.

**Dive in and
clear your mind!**



Our own wine

First, it was a dream. Then it became a bureaucratic nightmare. Now it is a reality! Since 2018, we have been granted the license to create and sell our own Bavarian wine. While you are here, be sure to experience a glass or two, sold exclusively here at the hotel.

Indulge in something unique!



Krolf

A delightful mixture of golf and croquet, the game of Krolf can be played on a specially designed course located just below the hotel. Guests love the playfulness of this unique game along with the breathtaking views they experience while Krolfing.

**Swimming, hiking, Krolf...
fun for everyone!**



Outings · Strolls · Hikes

In our info-corner you will find a plethora of information flyers about activities in our part of Bavaria: the Allgäu. Replace with: "If you need some help understanding a brochure that is in German, don't hesitate to ask for help at the reception desk. Also, any member of the Gross family will be glad to help you learn more about the area's activities.

Enjoy exploring our slice of paradise!

Hikes

Rotspitze & Breitenberg

6 hours, difficulty: hard

Demanding round trip with eBike and a lots of alpine air.

Hirschberg

5 hours, difficulty: medium

Diverse hike with breathtaking views over Bad Hindelang: two scenic rest stops.

Engradsgundsee

6 hours, difficulty: medium

Picturesque hike up to an idyllic mountain lake with panoramic views.

Strolls

Schleierfall

3/4 – 1 hour, difficulty: easy

This short waterfall hike is worth a visit all year round – especially during or shortly after rain.

Wildbach Tobel

2 hours, difficulty: easy to medium

Idyllic ravine starting close to the hotel – return route via “alte Jochstraße”.

Zipfelfall

1 – 1 1/2 hours, difficulty: easy

Starting in Hinterstein this path winds uphill through a tranquil wood to the mighty waterfall.

All weather trips

Breitachklamm

2 – 2 1/2 hours, difficulty: easy to medium
Awe inspiring ravine close to Oberstdorf with well maintained paths.

Starzlachklamm

1 1/2 – 2 hours, difficulty: medium

Wild and romantic ravine, smaller and more pristine than the one above – the path is more demanding.

Bad Oberdorf

1 1/2 hours, difficulty: easy

Round tour through the village with local museum at the “Obere Mühle” and St. Jodokus church.

Arrival

Check-in begins at 2 pm.

Baby cot

Available on request.

Backpacks and Hiking Poles

are available to borrow upon request.

Baggage service and storage

Baggage storage for arriving and departing guests is available at the reception desk. If you need support with your luggage please let us know, we will take care of everything.

Balcony

Because our birds can be little thieves, don't leave things out on your balcony. Also, please refrain from feeding them.

Bath chair

Available upon request.

Bedding changes

Bed linens are changed twice a week. If you wish a daily change (5€ each), please let reception know.

Bed Rail Guards

We offer bed rail guards for toddlers upon request.

Beverage vending machines: see soda machines

Bikes/E-Bikes

Can be stored (and charged) in one of the rooms "Fahrräder/Ski/Rodel" in the garage block. Some shops in town, like Waibel Bikes, offer ski/bikes/ebikes for rent. Please ask our reception.

Blankets

Additional blankets are available upon request. There are 2 freshly washed woolen blankets stored in your closet.

Breakfast

A broad variety of breakfast choices is available at our breakfast buffet in the restaurant between 7:30 – 10:30 a.m. Breakfast is included.

Room service (€ 5,00) for breakfast is available from 7:30 a.m. until noon. Please dial 333. Please let them know your name, room number and time you wish your food to be delivered.

Our standard room service breakfast includes: Coffee/cream/milk or tea/lemon/cream; butter, marmalade, rolls, German sausage, cheese, orange juice and a soft boiled egg.

If you would like to receive additional products, we will happily serve them for an additional fee.

Changing Mats

can be brought to your room upon request.

Cash – See „Valuables“.

Chargers/adapters:

We have a selection available at the reception for you to borrow free of charge.

Charging station for electric cars:

You will find 4 charging columns at the beginning of the parking lot. Another one is located in one of the garages.

Children

Our little guests of today are our tall ones of tomorrow. We offer special prices.

Copying & Scanning

Will be managed by our team at reception.

Cosmetics

Reservations gladly directly (Tel.: 349) or via the hotel reception.

Damages and more

Please let us know if there is anything to be repaired in your room and we will take care of it immediately.

Departure

Check-out time is at 11 am. You may use the spa area on your day of departure until 3:00 p.m.*

Diet

Most diet requirements can be met upon request (vegetarian, gluten-free, dairy-free, etc.) However, special dietary requests that require additional time and ingredients can usually be prepared for an appropriate fee.

Dogs

Dogs are allowed in the hotel upon request. They are not allowed in the restaurant and spa area (incl. outside parts).

E-Bikes (See Bikes)

Entertainment

Each morning you will find a "daily paper" at your breakfast table with a list of the day's activities and entertainment.

Fans

are available upon request.

Fruits

There will be a variety of fruits at breakfast and in bowls throughout the hotel. Take them with you and enjoy

* Except on days when the hotel is closed.

Garages

Available on reservation. You can obtain the current price at the reception.

Guest Cards

are now available digitally in the form of an app. The reception will be happy to assist you.

Gift-Shop

Located opposite of the restaurant entrance. You will find many gifts to delight a loved one. Please ask the receptionist to help you after-hours. There are additional souvenirs like German specialties available at the reception. Please order them one day prior your departure.

Internet connection

Free WLAN connection available throughout the hotel. Please use your name & room number.

Important hotel numbers:

- reception: 222
- restaurant/room service: 333
- spa: 349

Room numbers and phone numbers are not always identical. Please ask reception.

General number of Prinz-Luitpold-Bad: +49(0)8324 8900

Important: If you expect a call and are not in your room, please let the reception know, where you are. If we cannot find you, we will leave a note in your post box.

Important numbers

- Information: 11833
- Police: 110
- Mountain rescue service: +49 8324 8514
- Cab: +49 172 75 75 75 0

“Imberger Hornbahn”: +49 8324 2404

Tourist information in town: +49 8324 8920

Alpine consultation

/mountain guide office: +49 8324 953650

Ironing service

is available upon request

IT-Support

Our reception team will support you during IT-issues like internet connection fails and more.

Kettle

can be brought to your room upon request.

Key-Card:

Will be issued at check-in. It opens your room, the doors of the spa area and the rooms „Fahrräder/Ski/Rodel“. We will charge € 5/person, if lost.

Laundry/iron/sewing service

Laundry bags and order forms are located in your closet. If you leave your clothes before 9 a.m., you will get them back the same day (excl. weekends).

Luitpold's Health area (see Prinz-Luitpold-Spa)

Mattress

If you prefer to sleep on softer mattresses please inform us. We do have soft mattress toppers for your best sleep.

Meal times

- Breakfast (in room* + € 5,00) 7:30 a.m. - noon
- Breakfast buffet 7.30 - 10.30 a.m.
- Sleepy head's breakfast* 10:30 a.m. - noon
- Soup and cake: 2.30 - 4.30 p.m.
- Dinner at the hotel restaurant 6.00 - 8.30 p.m.

* Available products see “Breakfast“.

You will find everything available outside meal times at our menu “Snacks, Getränke“.

Minibar

There is no minibar installed in your room due to climate change reasons. But we will happily provide them on your request.

Missed dinner

We will refund missed dinners once if you have booked directly except during the holiday season. Please let us know one day in advance.

Non-slip Mats

for the shower available upon request.

Paper and envelopes

Are available in the writing case on your desk.

Payment Information

We accept Girocard, Visa, and MasterCard.

Pillow

We offer additional pillows on request. Anti-allergic, down, big, small, hard or smooth. See page 4 for more details.

Prinz-Luitpold-Bad

It is named after the Prince Regent Luitpold of Bavaria (1821 - 1912). Since his Royal Highness visited the bathing facility in 1888. After his visit, our family was able to secure the name "Prinz-Luitpold-sulfur mineral bath" for a fee of 30 Goldmarks to the royal treasury.

Prinz-Luitpold-Spa

Hours of operation: 6:30 am - 9:30 pm

As is the European custom, our mixed gender saunas are used without clothes.

Main building

Inside pool: filled with our sulfur spring water.
30 – 32 °C. Please shower before use.

Luitpolds health area: used with swimwear

- infrared sauna
- kingly cooling room (-10 °C, 14 °F)
- kneipp facilities

Colour sauna: 8:30 am – 8:30 pm

Spa Café (7:30 a.m. – 9:30 p.m.): Nuts/Fruit/Tea;
Afternoon Soup/Cake (2:30 p.m. – 4:30 p.m.)

Refugium

Outside door:

Little river with natural walking basin, outdoor infinity pool & sunbathing area

Via the underground passage: Refugium with outdoor sauna (11:00 a.m – 9:30 p.m, nude), steam bath (11:00 – 9:30 p.m, nude), jacuzzi and quiet rooms with waterbeds, “Textile sauna” (11:00 a.m – 9:30 p.m, swim wear) and more.

Spa-Treatments:

Are available on the ground floor of the hotel. Appointments can be made prior to arrival and during your stay (reception: -222 or spa: -349)

Television

SAT-TV with German and international channels.

Reception:

Open 24/7 to support you (-222).

Room Service

is available for an additional charge of € 5,00 (breakfast, drinks and food. Available products and prices are listed on our menu „Snacks, Getränke“).

7:00 a.m – 11 p.m: Phone 333

Sauna (see Prinz-Luitpold-Spa)

Services

Our reception team will support you with ticket reservations, timetable information and more.

Sewing Kit

Can be found in your guest folder.

Shoe cleaner

Located in the room “Fahrräder/Ski/Rodel“ in the garage block.

Ski

See „Bikes“

Socket adapters

We have a selection of international socket adapters available at the reception, which we would be happy to lend you if needed.

Soda machine

Is located next to room 306

Spa (see Prinz-Luitpold-Spa)

Sulfur water

The therapeutic sulfur springs that feed our spas have been in use since the 17th century. Their healing waters spawned the opening of the first spa in 1864 and over time, this spa became our hotel.

Swimming Pools (See Prinz-Luitpold-Spa)

Taxi

We will gladly book your taxi transfer to/from the train station. If you stay with us 5 or more days, your ride to the station is on us. Valid only for direct bookings.

Telephone

All rooms are equipped with a telephone and

outside line. For information about charges, please contact reception.

Time of rest

We like to treat all of our guests with acoustic peace: from 10.00 p.m. – 8 a.m. and 1 – 3 p.m.

Ticket reservation/bookings/appointments

Will be done by reception.

Timetable information

Is available at reception.

Toiletries

If you have forgotten to bring any essential toiletries, please contact reception. We have a small set available, which includes a toothbrush, toothpaste, a razor etc.

Towel change

On a daily basis (if needed):
towels on floor = please change towels.

Umbrellas

Are available at reception for rent or to buy.

Treatments (see Prinz-Luitpold-Spa)

Wake up service

Please contact reception with your request.

WLAN (see Internet connection)

Valuables

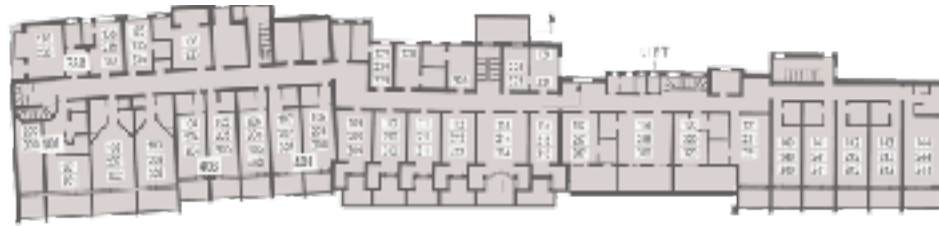
Can be stored in your room safe or at reception.

VAT

Our prices include service and VAT.

*We wish you a very
pleasant stay!*

HOTEL FLOOR PLAN



FLOORS 1 - 4

Rooms 101 - 403



MAIN
ENTRANCE

GROUND FLOOR

Rooms 17 - 44

1 Reception

2 Lobby

3 Castle room

4 Restaurant

5 Info corner

6 Gift shop

7 Coat rack

8 Bar

9 Toilet

10 Regent's room

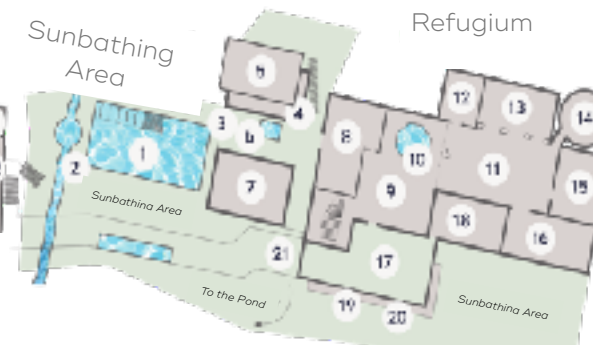
11 Massages

12 Massages



Beer
Garden

Indoor
Pool



BASEMENT

1 Bar

2 Knight's room

3 Cloak room

4 Stage

5 Hofjagdstube

6 Toilet

7 Sulfarium

8 Spa reception

9 Relax area

10 Locker room/change

11 Mud room

12 Haslauer body packs

13 Beauty salon

14 Physio

15 Podiatry

16 Luitpold's Spring
of Health

17 Indoor pool

18 Toilets & showers

19 Relax room

20 Colour sauna

21 Dip tank/Showers

22 Access to Refugium

OUTDOOR SPA AREA & REFUGIUM

1 Outdoor pool

2 Natural water-treading
basin

3 Nude area

4 Steam bath

5 Nude sun deck

6 Dip tank

7 Outdoor sauna

8 Adventure showers
with ice spring

9 Tea room

10 Jacuzzi

11 Panoramic rocking
chairs room

12 Alpine hut with warm
sun chairs

13 Green room with
water beds

14 Textile sauna

15 Floating beds with UV*

16 Panoramic relax-room

17 Sun terrace

18 Winter garden

19 Toiletttes

20 Gym

21 Underground passage to
the main house



HOTEL
PRINZ-LUITPOLD-BAD



TOPHOTELS

A. Gross GmbH & Co. KG Hotel Prinz-Luitpold-Bad • Andreas-Gross-Str. 7 • 87541 Bad Hindelang/Bavaria
Phone: +49 8324 890 0 • Fax: +49 8324 890-379 • Homepage: www.luitpoldbad.de/en
Partner liable to unlimited extent: Albert Gross Verwaltungs-GmbH, Hindelang (AG Kempten HRB 4836)
General Manager: Albert Gross & Armin Gross • District court Kempten, HRA 6087